

SUNDAY FREE PRESS

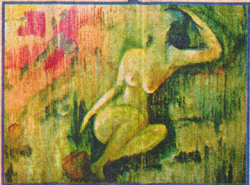
www.freepressjournal.in

JOURNAL

The Feminine Mystique



Pratima Sheth's paintings are a fine portrayal of Indian women, their varied moods and their mysterious feelings, in the different phases of their lives



BY REGINA ANAND VEENA

PRATIMA SETH'S semi-nude paintings, which were recently exhibited at the Jehangir Art Gallery, are a representation of feminine sensibilities sketched with a passion that flows from her subconscious mind. The aesthetic flow of the colour stream emitting from her subconscious mind finds an instant expression in her strokes, giving women in paintings a mystical look. Women are plain looking with no beautiful features, but the abstract look on their face gives her paintings an enigmatic feel.

Colours spill in the background forming an effective landscape, to support the feminine shattered mystical emotion, as nature is her only form of divine support. The art in the joys of the mystical ode, floats and takes its own form of symmetry to complete the painting in the form of divine art - the passion of the heart, mind and the soul are well portrayed in the painting. Regarding the mysticism of her paintings,

the artist says, "I have portrayed the moods and the emotions of Indian women in different walks of their lives". The artist has also sketched a lady enjoying the joys of her youth and the earthly zest for life, rejecting all the obstructions coming by her way. One of the look as if the woman in the painting is looking from the land to the heaven surrendering her passions to the almighty and asking the lord to erase sorrows emitting from her heart.

The focal point of Seth's works is the expression of varied feelings at different phases in a woman's life, including the mood swing that women often experience. At times, her paintings depict figurative the works of the colour drip-wash technique, giving impression of the modern abstract style. Paintings of semi-nude terms are a combination of the above theory with a more traditional treatment. The compositions possess just a suggestion of action. The unity and compactness of the figures are simplified by action. They are gripped in powerful framework of vibrant colours and intensive light, yet they are sensual. They personify a simple solidity of the female body. The original aspect of her figurative work is a display of feelings although there are no faces visible. They hold natural romanticism, which co-exists with composition and colours. "In my work one envisions the sublime of the female form," says Pratima Sheth.